

Misrepresentation of WHO Data

World Health Organization (WHO) data presented is manipulated by Dr. Connett

Figure 1: Data from WHO Database

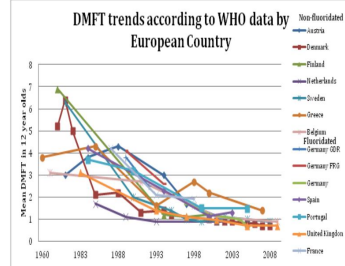
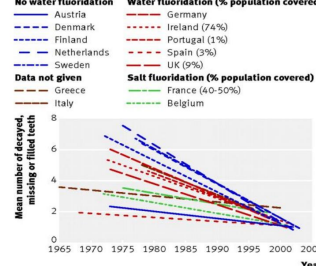


Figure 2: Data manipulated to show linear trend



Graphs created to depict declining trends in tooth decay
 Figure 1. Source: Data from the World Health Organization database. Available at <http://www.mah.se/CAPP/Country-Oral-Health-Profiles/>;
 Figure 2. Source: Cheng, KK, Chalmers, I, Sheldon, TA. Adding Fluoride to water supplies. *BMJ*. 2007;335(7622):699-702.

Figure 1 on the left is the actual graph that is from the World Health Organization

Figure 2 on the right is the manipulated graph that has been presented here tonight to show a false linear relationship of the data in Figure 1.

Figure 3: Mean DMFT 12 Year olds in Ireland by Water Fluoridation Status

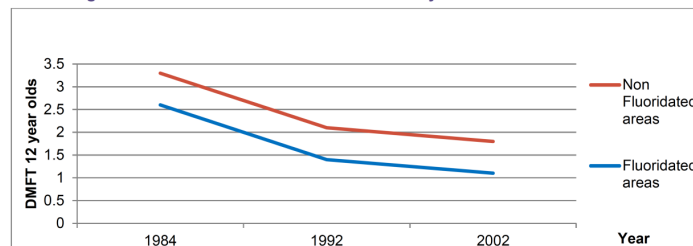


Figure 3: Data from the World Health Organization database. Available at <http://www.mah.se/CAPP/Country-Oral-Health-Profiles/>

Figure 1 on the left is the actual graph that is from the World Health Organization.

Figure 2 on the right is the manipulated graph that has been presented here tonight to show a false linear relationship of the data in Figure 1.

Figure 3: This figure shows that cavity levels are indeed falling since the introduction and widespread use of fluoridated toothpaste and mouthrinses (upper line). However, when cavity rates in fluoridated communities are viewed, the cavity rates are clearly reduced by 25% or more on top of those already prevented by fluoridated toothpaste and mouthrinses.

This misuse of the data by Dr. Connett is slanted to show his opinion that fluoridated water is unnecessary.