

RE-THINKING FLUORIDATION

CITY OF XXXXX FLUORIDATES THE POTABLE DRINKING WATER.

- 0.7 mgF/L (1 ppm)**
- WELL WATER HAS 0.4 mgF/L**
- COST TO FLUORIDATE = \$55,000.00
ANNUALLY**

WELL WATER – CALCIUM FLOURIDE



Health	2
Fire	0
Reactivity	0
Personal Protection	J

Material Safety Data Sheet Calcium fluoride MSDS

Section 1: Chemical Product and Company Identification

Product Name: Calcium fluoride

Catalog Codes: SLC1366, SLC3157

CAS#: 7789-75-5

RTECS: EW1760000

TSCA: TSCA 8(b) inventory: Calcium fluoride

CI#: Not available.

Synonym: Fluorspar, Irtran; Calcium Difluoride

Chemical Name: Calcium Fluoride

Chemical Formula: CaF₂

Contact Information:

Sciencelab.com, Inc.

14025 Smith Rd.

Houston, Texas 77396

US Sales: **1-800-901-7247**

International Sales: **1-281-441-4400**

Order Online: ScienceLab.com

CHEMTREC (24HR Emergency Telephone), call:

1-800-424-9300

International CHEMTREC, call: 1-703-527-3887

For non-emergency assistance, call: 1-281-441-4400

CITY WATER – FLUOSILIC ACID



Health	3
Fire	0
Reactivity	0
Personal Protection	

Material Safety Data Sheet Fluosilicic acid MSDS

Section 1: Chemical Product and Company Identification

Product Name: Fluosilicic acid

Catalog Codes: SLF1735

CAS#: 16961-83-4

RTECS: VV8225000

TSCA: TSCA 8(b) inventory: Fluosilicic acid

CI#: Not available.

Synonym: Hydrogen hexafluorosilicate

Chemical Name: Not available.

Chemical Formula: H₂SiF₆

Contact Information:

Sciencelab.com, Inc.

14025 Smith Rd.

Houston, Texas 77396

US Sales: **1-800-901-7247**

International Sales: **1-281-441-4400**

Order Online: ScienceLab.com

CHEMTREC (24HR Emergency Telephone), call:
1-800-424-9300

International CHEMTREC, call: 1-703-527-3887

For non-emergency assistance, call: 1-281-441-4400

WHY DO WE FLUORIDATE?

- THE AMERICAN DENTAL ASSOCIATION (ADA)**
- THE CENTERS FOR DISEASE CONTROL (CDC)**
- THE AMERICAN MEDICAL ASSOCIATION (AMA)**
- ALL STATE HEALTH DEPARTMENTS**
- ALL AMERICAN DENTAL SCHOOLS, RESEARCH INSTITUTES AND MAJOR FUNDING ENTITIES**
- YOUR FAMILY DENTIST**

WHY DO WE FLUORIDATE?

FLUORIDE PREVENTS TOOTH DECAY.

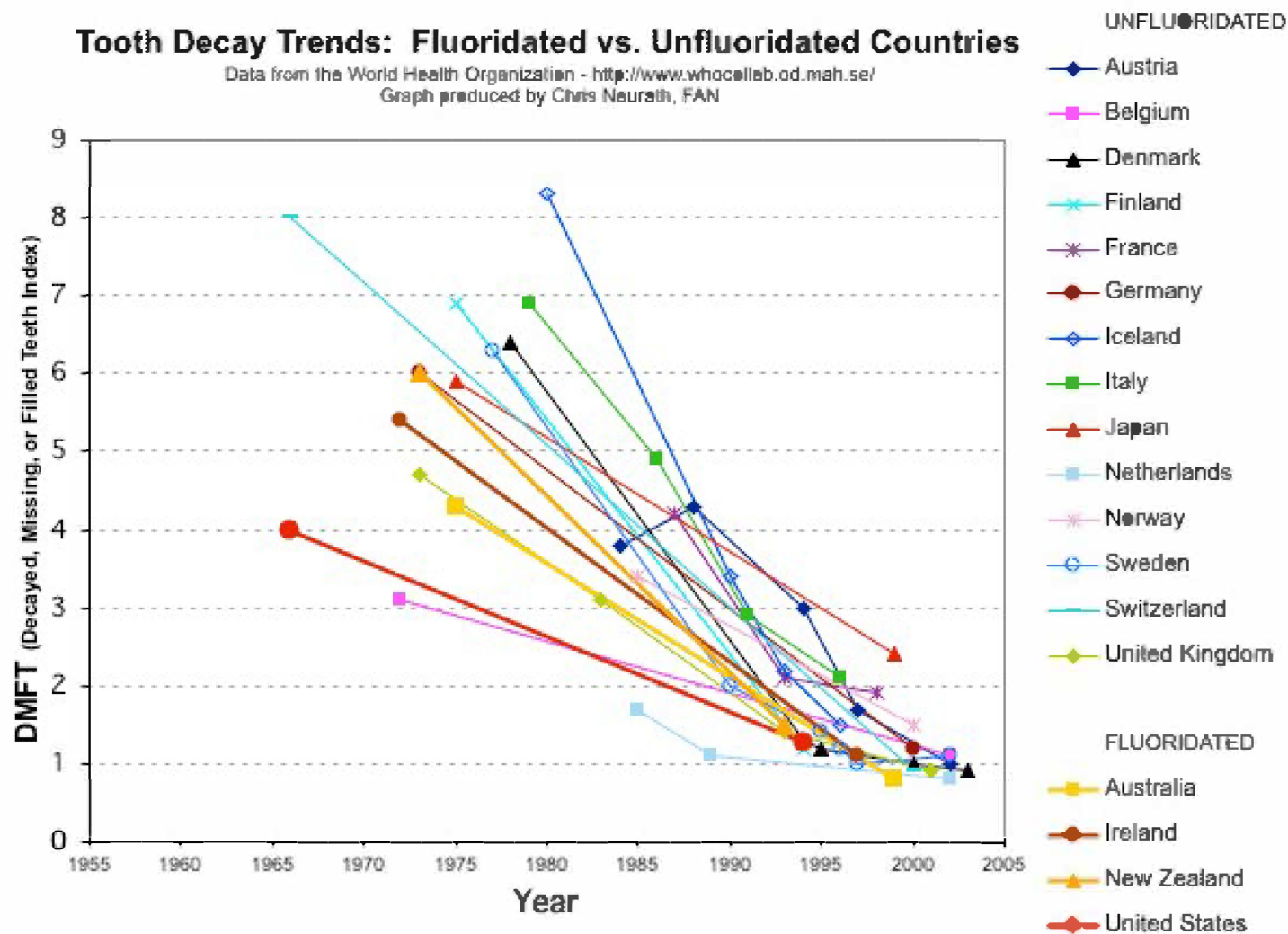
INSURE EVERYONE GETS IT!

WHY RECONSIDER?

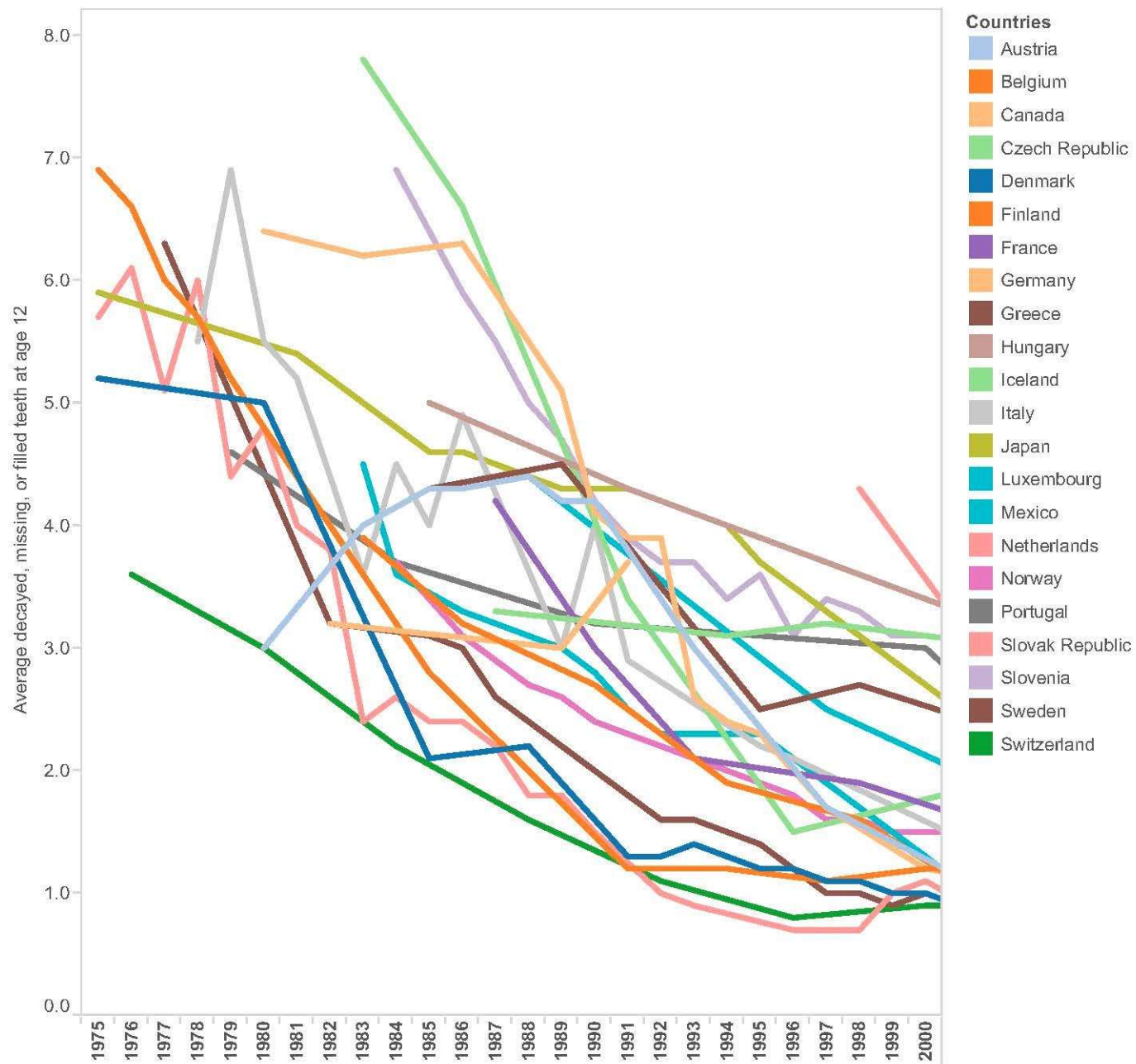
IS IT REALLY NECESSARY?

Tooth Decay Trends: Fluoridated vs. Unfluoridated Countries

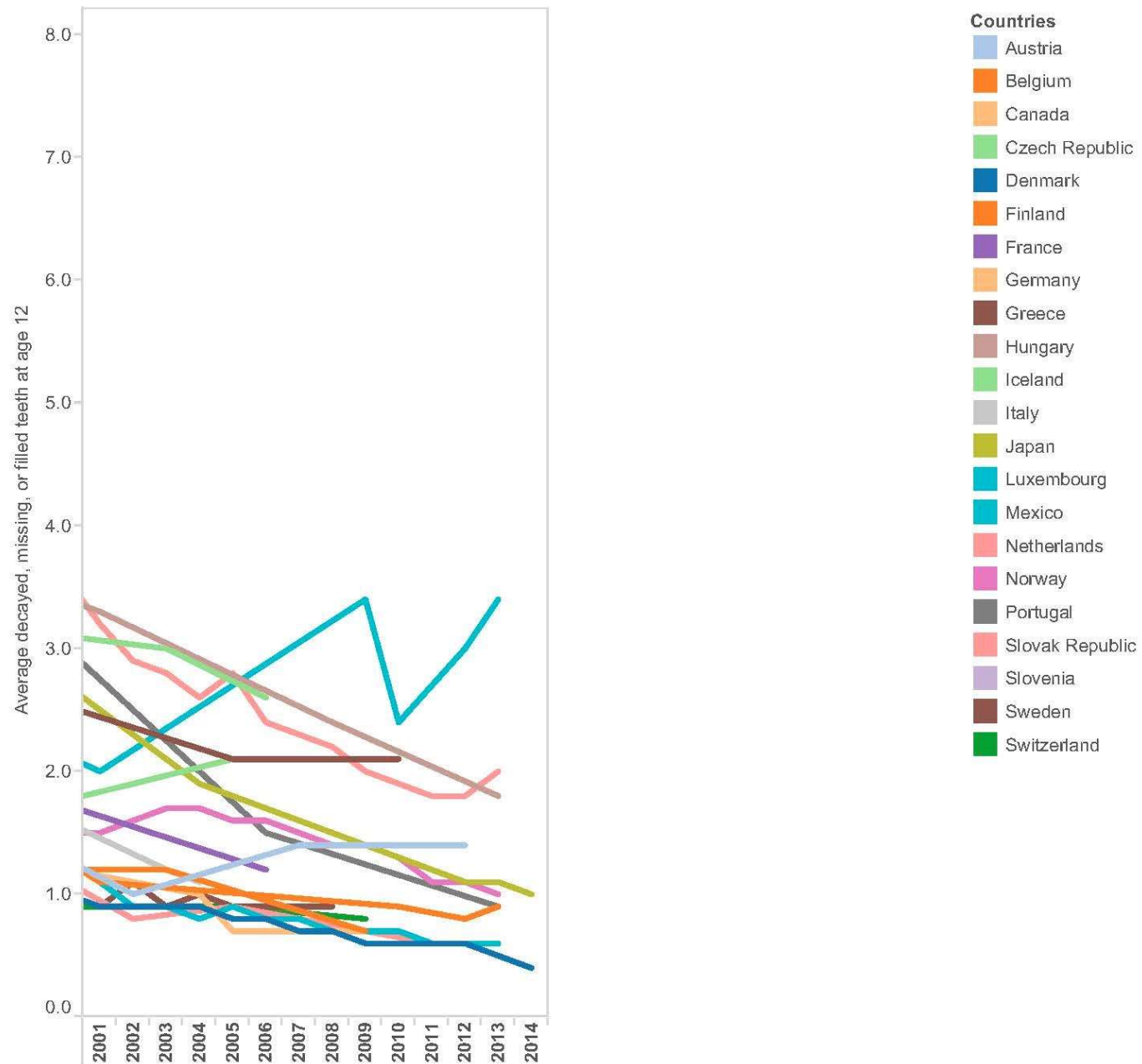
Data from the World Health Organization - <http://www.who.colleab.od.mah.se/>
Graph produced by Chris Neaurath, FAN



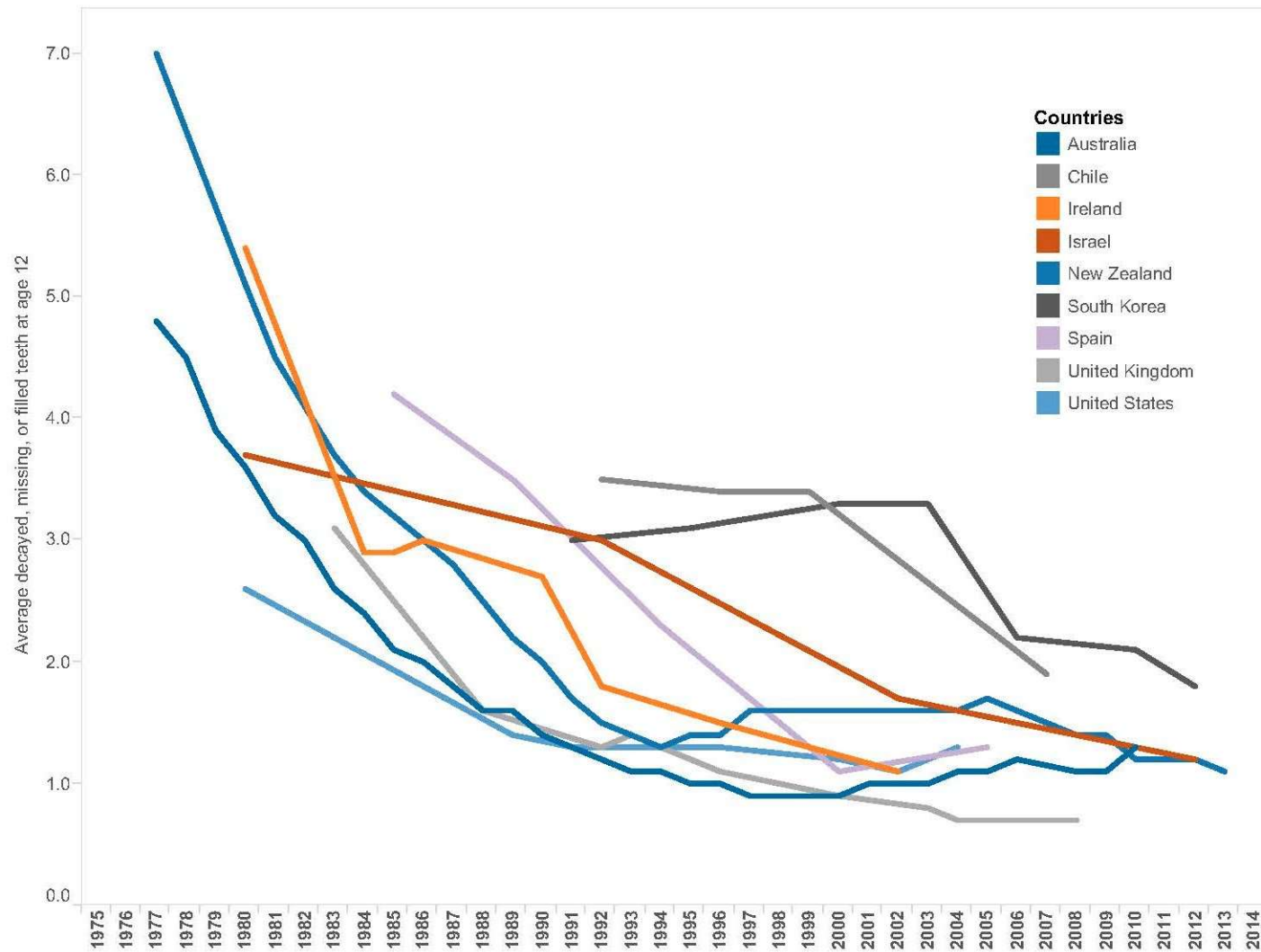
Countries without fluoridated water



Countries without fluoridated water



Countries with Fluoridated water



ARE THERE DANGERS?

FLUORIDE CAUSES FLUOROSIS, A DISFIGUREMENT OF THE TEETH





SKELETAL FLUOROSIS



FLUORIDE AGGRAVATES DIABETES AND KIDNEY DISEASE



FLUORIDE DAMAGES THE THYROID GLAND BY REPLACING NECESSARY IODINE



FLUORIDE LOWERS IQ



- 2007 AND 2010 STUDIES BY ADA RECOMMEND NON FLUORIDATED WATER FOR BABY FORMULA
- CDC ISSUES SAME WARNING
- ACCORDING TO CDC ONE-THIRD OF US CHILDREN 12 TO 15 HAVE MILD ENAMEL FLUOROSIS

**FLUORIDATED WATER CONTAINS MORE THAN 250 TIMES MORE
FLUORIDE THAN MOTHER'S MILK**



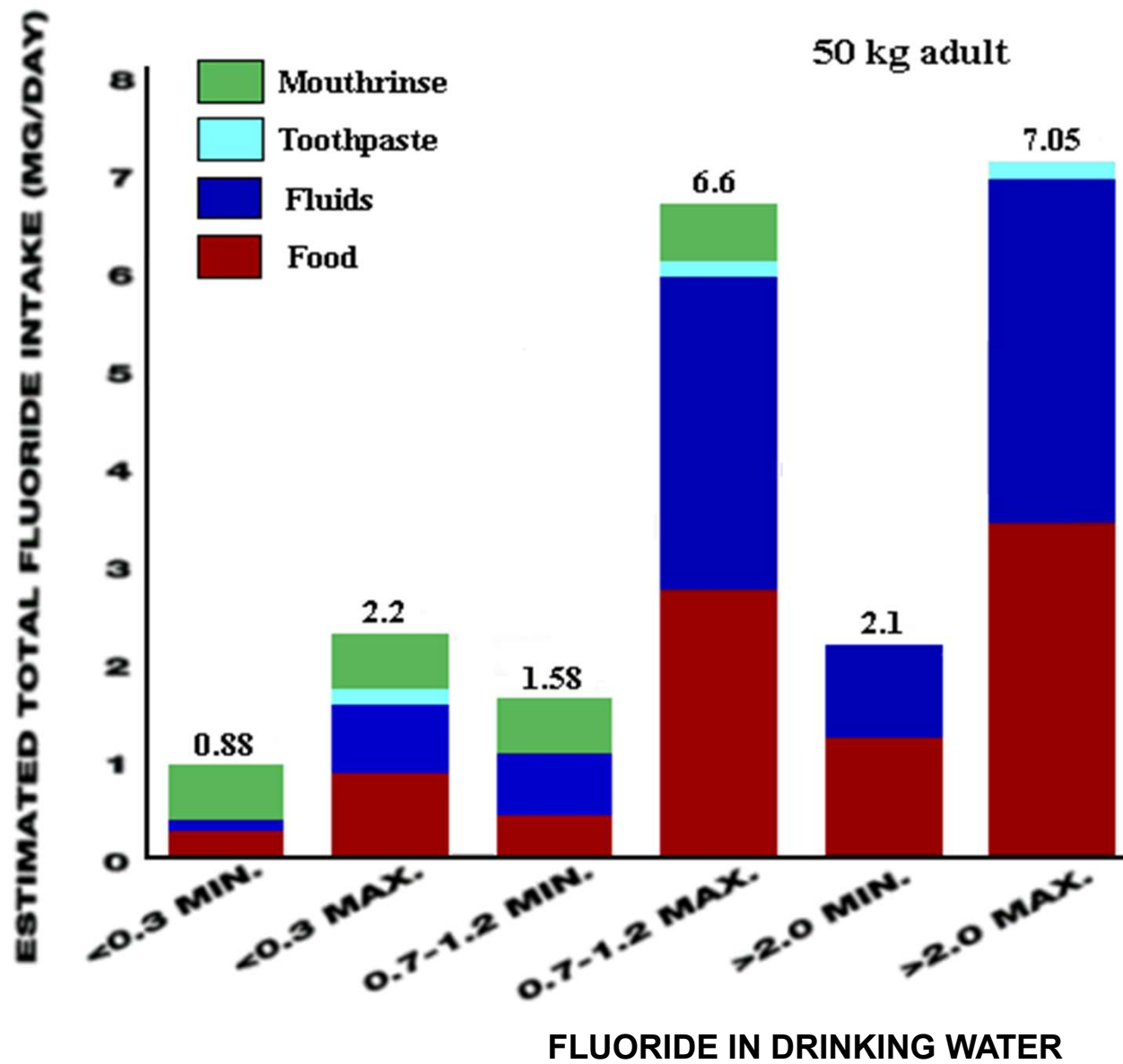
**EVERYONE RECEIVES THE SAME
CONCENTRATION REGARDLESS OF AGE,
SIZE, ACTIVITY LEVEL AND STATE OF
HEALTH**



- CONSIDER ALL OF THE AVAILABLE SOURCES OF FLUORIDE. MANY FOODS AND DRINKS CONTAIN AN ABUNDANCE OF FLUORIDE, I.E. GRAPES, TEA ETC.

- 1950s ADULT DAILY INTAKE OF FLUORIDE WAS ESTIMATED AT 1.0 TO 1.5 mg/day

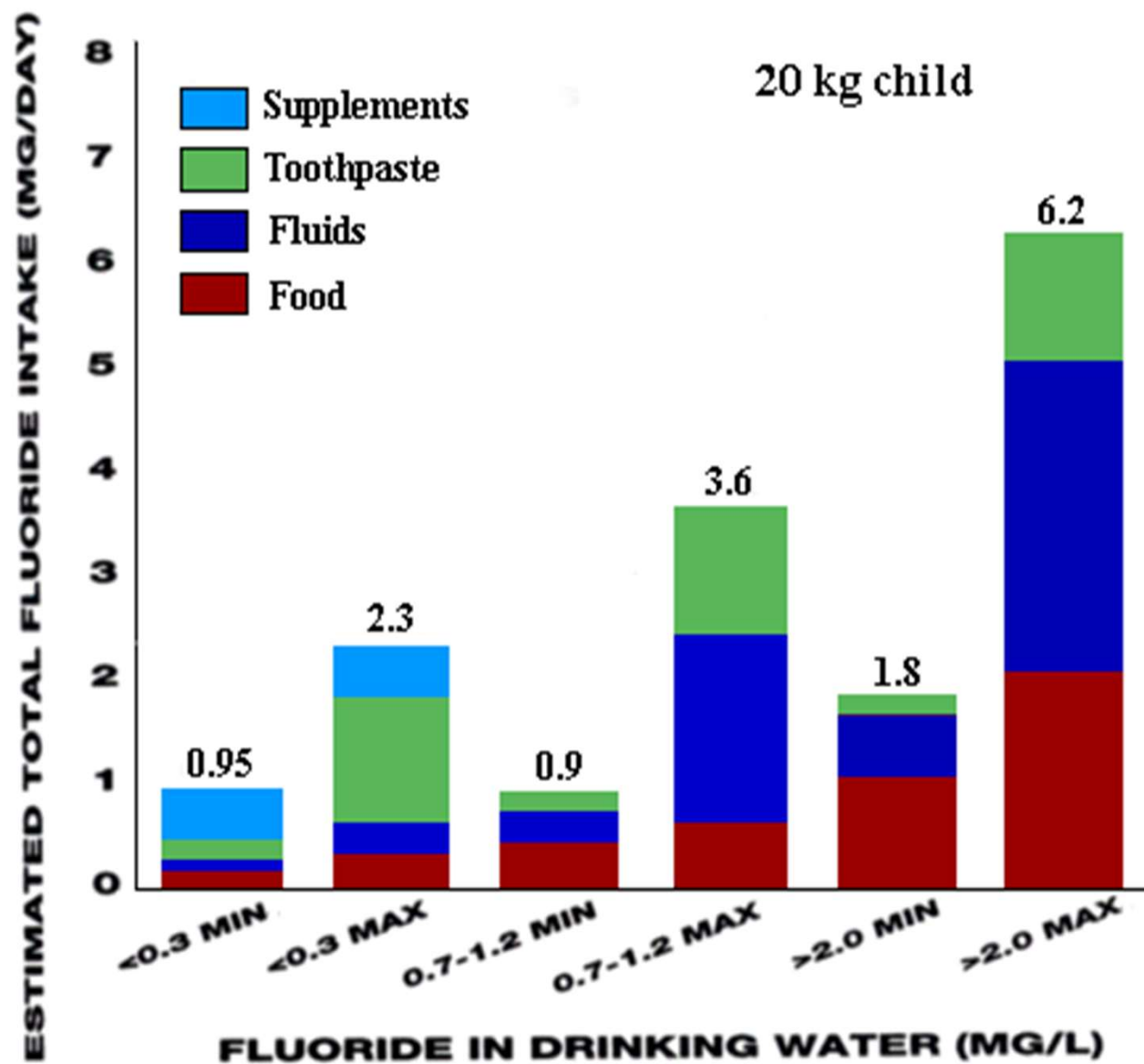
- TODAY POPULATION SUBSETS GET AS MUCH AS 14 mg/day.
- CHRONIC INTAKES OF BETWEEN 2 AND 8 mg/day CAUSE PRE-CLINICAL STAGE SKELETAL FLUOROSIS. THIS STAGE IS OFTEN MISTAKEN FOR ARTHRITIS.



- MANY 6-MONTH OLD INFANTS ARE RECEIVING ENOUGH FLUORIDE TO EQUAL THE DOSE KNOWN TO CAUSE CRIPPLING SKELETAL FLUOROSIS.

- 2017 REPORT - FLUORIDE EXPOSURE BEFORE BIRTH = LOWER IQ
- TESTED 299 WOMEN DURING PREGNANCY AND THEIR CHILDREN BETWEEN 6 AND 12 YEARS OF AGE
- CHILDREN TESTED AT 4, 6 AND 12

- 2014 FLUORIDE DOCUMENTED AS NEUROTOXIN THAT COULD BE HAZARDOUS TO CHILD DEVELOPMENT ALONG WITH 10 OTHER INDUSTRIAL CHEMICALS INCLUDING LEAD, ARSENIC, TOLUENE AND METHYLMERCURY.



- PINEAL GLAND IS ALSO SOMETIMES CALLED THE THIRD EYE
- PINEAL GLAND IS RESPONSIBLE FOR PRODUCING MELATONIN TO REGULATE SLEEP PATTERNS
- MELATONIN ALSO AFFECTS REPRODUCTIVE ORGANS

A



B



INTERNATIONAL ASSOCIATION OF ORAL MEDICINE AND TOXICOLOGY (IAOMT) LINKS THE FOLLOWING TO FLUORIDE:

- ACNE AND OTHER SKIN PROBLEMS
- CARDIOVASCULAR PROBLEMS, INCLUDING ARTERIOSCLEROSIS AND ARTERIAL CALCIFICATION
- REPRODUCTIVE ISSUES, LOWER FERTILITY AND EARLY PUBERTY IN GIRLS
- THYROID DYSFUNCTION
- JOINT AND BONE CONDITIONS, OSTEOARTHRITIS, OSTEOPOROSIS, BONE CANCER
- NEUROLOGICAL PROBLEMS, LOWER IQS IN CHILDREN AND POSSIBLE LINKS TO ADHD AND ALZHEIMER'S

WHY STOP FLUORIDATION?

- **MANY SOURCES OF FLUORIDE -
FLUORIDATION IS NO LONGER
NECESSARY**
- **FLUORIDATION OF DRINKING
WATER MAKES IT DIFFICULT TO
AVOID OVER EXPOSURE**